

www.ersatzteil-service.de

www.ersatzteilplan.de

IBEA

Serie: dal n. 1001

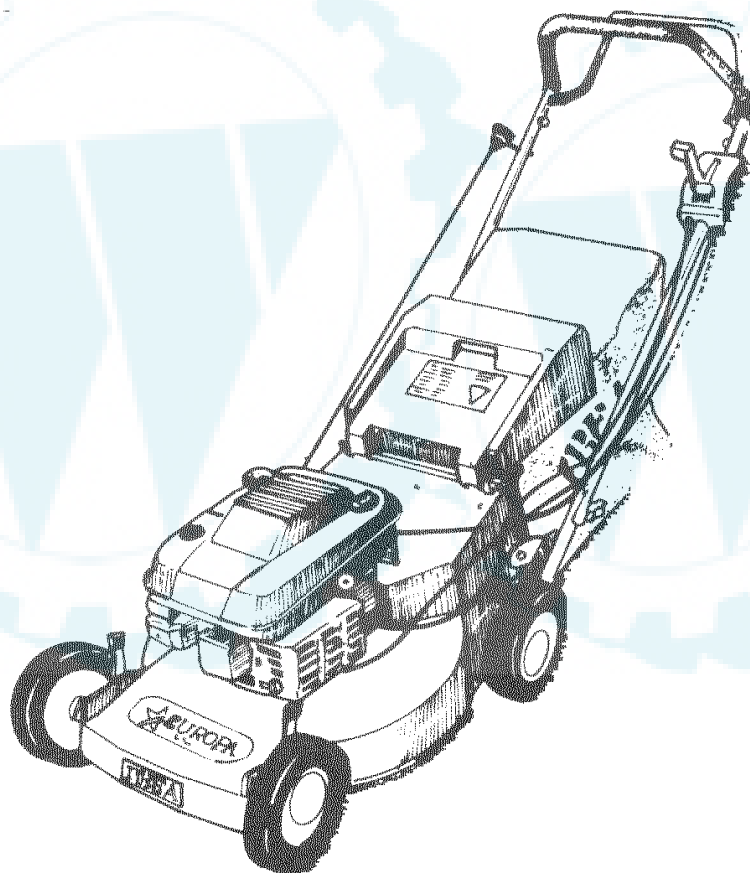
Stampato n. P5090106

LISTA RICAMBI

SPARE PART LIST

ERSATZTEILLISTE

LISTE DES PIECES DE RECHANGE



TOSAERBA
mod. EUROPA 530

[Ihr Ersatzteilspezialist im Internet](#)

REF. N°	PART. N°	QTY	DESCRIZIONE	DESCRIPTION	DESCRIPTION	BESCHREIBUNG
1	P5140147		DECALCO	DECAL	MARQUAGE	AUFKLEBER
2	P5140148		DECALCO	DECAL	MARQUAGE	AUFKLEBER
3	P5140186		DECALCO	DECAL	MARQUAGE	AUFKLEBER
4	P5140202		DECALCO	DECAL	MARQUAGE	AUFKLEBER
5	P5140503		DECALCO	DECAL	MARQUAGE	AUFKLEBER
6	P5140109		DECALCO	DECAL	MARQUAGE	AUFKLEBER
7	P5140110		DECALCO	DECAL	MARQUAGE	AUFKLEBER
	P5090099		MANUALE EUROPA 530	OPERATOR'S MANUAL	MODE D'EMPLOI	BEDIENUNGSANLEITUNG
	P5110012		CHIAVI CANDELA	SPARK PLUG SPANNER	CLÉ POUR BOUGIE	KERZENSCHLUESSEL



WARNING DANGER!
Blade rotates when engine is running. Only use the mower with grass catcher in place or with safety chute door closed. Disconnect high tension wire from spark plug before performing any repairs or maintenance to the machine.

ATTENZIONE PERICOLO!
La lama ruota quando il motore è in moto. Usate il falciatore soltanto con il sacco di raccolta erba montato oppure con il portello di protezione chiuso. Prima di ogni riparazione o manutenzione staccate il cavo di accensione dalla candela.

VORSICHT, GEFAHRE!
Rotierende Messer bei laufendem Motor! Benutzen Sie das Mäher nur mit montiertem Grasammaler oder geschlossener Schutzklappe. Vor Reparatur- oder Servicearbeiten am Mäher unbedingt Zündkabel von Zündkerze entfernen!

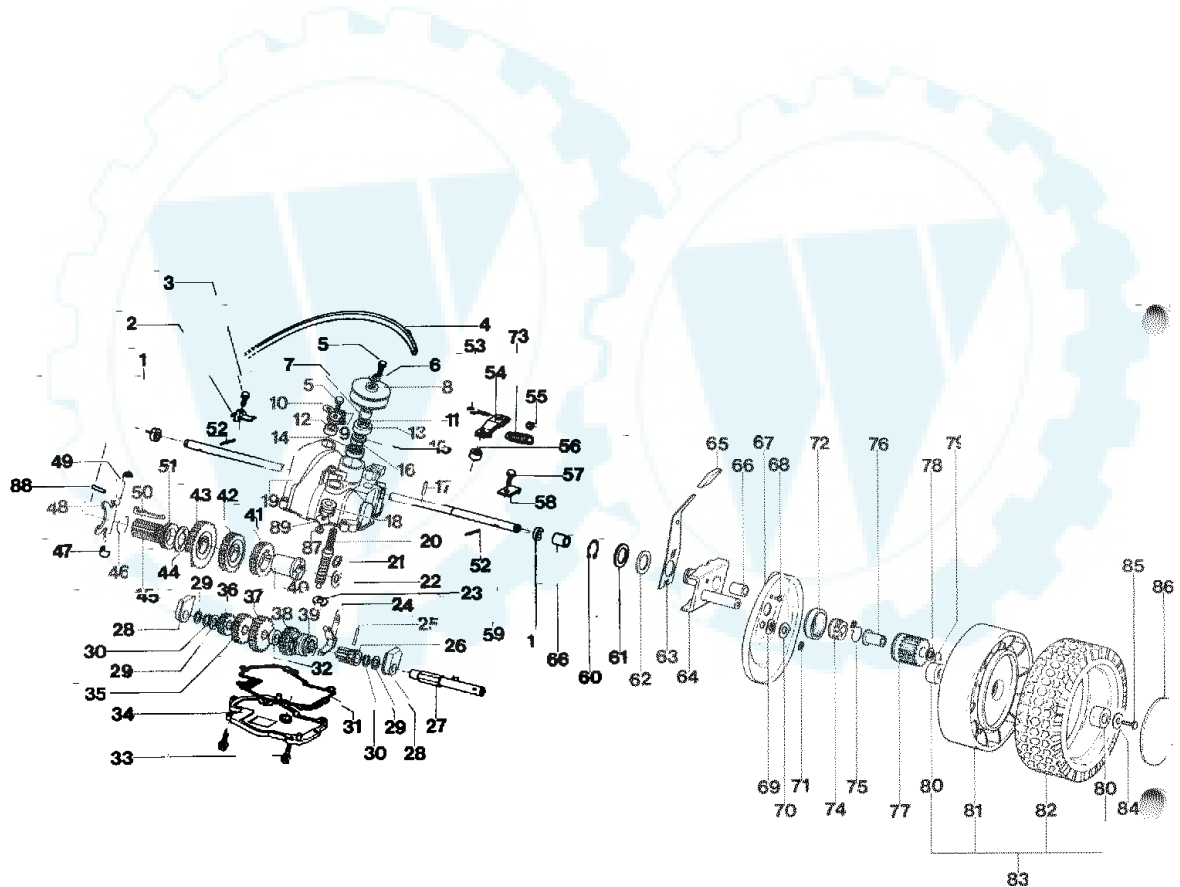
ATTENTION DANGER!
Couteaux en rotation lorsque le moteur marche! N'utilisez la tondeuse qu'avec le collecteur d'herbe monté ou avec le clapet de protection fermé. Avant de faire une réparation ou des travaux de service à la tondeuse, il faut absolument enlever le câble d'allumage de la bougie.



REF. N°	PART. N°	QTY	DESCRIZIONE	DESCRIPTION	DESCRIPTION	BESCHREIBUNG
2	P2020187	1	SCIVOLO ERBA	DEFLECTOR	DÉFLECTEUR	LEITBLECH
3	P00011098	1	TELAIO CESTELLO	BAG FRAME	MONTURE	GESTELL
4	P2020149	1	DEFLEITTORE	SHIELD	PLAQUE DE PROTECTION	SCHUTZ
5	P3160042	1	SACCO	BAG	SAC	GRASFANGSACK
6	2020050A1	2	POMELLO	KNOB	POIGNÉE	MUTTER
7	P1050011	2	DADO M8 AUTOBLOC.	NUT	ECROU	MUTTER
8	P01570098	1	STEGOLA INF. DX	RIGHT LOWER HANDLEBAR	GUIDON SUPERIEUR	HOLMUNTERTEIL R.
9	1010026A1	2	VITE M8X40	SCREW	VIS	SCHRAUBE
10	P1050011	2	DADO M8 AUTOBLOC.	NUT	ECROU	MUTTER
11	P1010082	2	VITE	SCREW	VIS	SCHRAUBE
12	P1010070	2	VITE	SCREW	VIS	SCHRAUBE
13	P1050011	3	DADO M8 AUTOBLOC.	NUT	MOTEUR	MOTOR
14	P01570298	1	STEGOLA INF. SX	LEFT LOWER HANDLEBAR	ECROU	MUTTER
15	P3020027	2	MOLLA PORTELLO	SPRING	GUIDON INF. GAUCHE	HOLMUNTERTEIL L.
16	P3140238	2	DISTANZIALE	SPACER	RESSORT	FEDER
17	P2020203	2	MT TUBO	STRIP	DOUILLE	ABSTANDSSTUECK
18	P2020189	1	PORTELLO	SHIELD	JOINT	DICHTUNG
19	P2020062	2	COPRIMOZZO ANT. E P.	COVER	PROTECTION	KLAPPE
20	1010018A1	2	VITE	SCREW	COUVERCLE	DECKEL
21	102007A1	2	RONDELLA	WASHER	VIS	SCHRAUBE
22	P2020083	2	COPERTONE	TYRE	RONDELLE	SCHIBE
23	P3030023	4	CUSCINETTO 6201 2RS	BEARING	PNEU	REIFEN
24	P2020206	2	FERCHIO ANTERIORE	FRONT WHEEL HUB	PALIER	LAGER
25	P2020128	2	COPRIRUOTA ANTERIORE	WHEEL COVER	JANTE ANT.	FELGE
26	P00015198	2	RUOTA ANTERIORE	WHEEL ASS. Y	PROTECTION	ABDECKUNG
27	P2020088	2	DISTANZIALE	SPACER	ROUE COMPL.	RAD KOMPL..
28	P1020050	2	RONDELLA	SPRING WASHER	DOUILLE	SCHIBE
29	P01141098	2	PORTA RUOTA ANT.	FRONT WHEEL SUPPORT	RONDELLE ÉLASTIQUE	FEDERSCHIBE
30	P1010116	2	VITE	SCHREW	SUPPORT ROUE ANT.	RADHALTER
31	P3040118	2	BUSSOLA	BUSHING	VIS	SCHRAUBE
32	P4020038	1	LEVA ANTERIORE DESTRA	RIGHT WHEEL LEVER	DOUILLE	BUECHSE
33	P4020039	1	LEVA ANTERIORE SINISTRA	LEFT WHEEL LEVER	LEVIER ROUE DROITE	RADHEBEL R.
34	P2020077	2	POMELLO LEVA	KNOB	LEVIER ROUE GAUCHE	RADHEBEL L.
35	P1010079	2	VITE GODRONATA	SCREW	DOUILLE	BUECHSE
36	P1010085	2	VITE TRUCIOLARE	SCREW	POIGNÉE	ABDECKUNG
37	5040001A1	1	FASCETTA	CLAMP	VIS	SCHRAUBE
38	P2020087	1	COLLARE FERMACAVO	RING	VIS	SCHRAUBE
39	P1080018	2	PERNO PER PORTELLO	PIN	CLAMP	RAPPBAND
40	P02020498	1	COPRINCINGHIA	BELT COVER	RING	RING
41	P106004	2	FISSATORE	STARLOCK	GOUVILLE	STIFT
42	P02005098	1	SCOCCA GRIGIA	DECK	PROTECTION	KEILRIEMEN
43	1020014A1	3	RONDELLA	WASHER	STARLOCK	STARLOCK
44	P1010097	2	VITE	SCREW 8x75	CHASSIS	GEMAEUSE
44	P1010166	1	VITE	SCREW 8x110	RONDELLE	SCHIBE
45	P1050012	2	DADO	NUT	VIS 8x75	SCHRAUBE 8x75
46	P109003	1	CHIAVETTA MOTORE	KEY 4,8	VIS 8x110	SCHRAUBE 8x110
46	1090001A1	1	CHIAVE WOODRUFF	KEY	ECROU	MUTTER
47	P3040101	1	BUSSOLA LAMA Ø 25	BLADE BUSHING Ø 25	CLAVETTE 4,8	SCHIBENFENDER 4,8
47	P3040102	1	BUSSOLA LAMA Ø 22,2	BLADE BUSHING Ø 22,2	CLAVETTE	SCHIBENFENDER
48	P4050028	1	LAMA	BLADE	DOUILLE DE COUTEAU Ø 25	MESSERBUECHSE Ø 25
49	1110002A1	1	MOLLA A TAZZA	SPRING	DOUILLE DE COUTEAU Ø 22,2	MESSERBUECHSE Ø 25
50	P1020067	1	RONDELLA	WASHER	COUTEAU	MESSER
51	P1010060	1	VITE LAMA	BLADE SCREW	RESSORT	FEDER
52	P01032298	1	TRAVERSINO	CHASSIS RIB.	RONDELLE	SCHIBE
53	1010024A1	4	VITE	SCREW	VIS DE COUTEAU	MESSERSCHRAUBE
*	P00010098	1	CESTELLO COMPLETO	GRASS BAG COMPL.	REINFORCEMENT	VERSTEIFUNG
					VIS	SCHRAUBE
					SAC DE RAMASSAGE COMP.	GRASFANGSACK KOMPL.

Tav. 2

Vista assale posteriore e cambio 3 marce
Rear axle and gear box 3-speed
Essieu arrière et transmission 3 vitesses
Hinterachse und fahrgetriebe 3-gang



REF. N°	PART N°	QTY	DESCRIZIONE	DESCRIPTION	DESCRIPTION	BESCHREIBUNG
1	P3170011	2	ANELLO DI TENUTA	OIL SEAL	JOINT D'ARBRE	WELLENDICHRING
2	P4010124	1	COP. FISSA CAVO TRAZ.	COVER	COUVERCLE	FEDERHALTER
3	1010018A1	1	VITE	SCREW	VIS	SCHRAUBE
4	P3010025	1	CINGHIA TEM 860	TRANSMISSION BELT	COURROIRE DE TRANSM.	RIEMEN
5	1010018A1	2	VITE	SCREW	VIS	SCHRAUBE
6	1020007A1	1	RONDELLA	WASHER	RONDELLE	SCHIBE
7	P3040049	1	BUSSOLA DISTANZIALE	BUSHING	DOUILLE	BUECHSE
8	P3040214	1	PULEGGIA	PULLEY	POULIE	RIEMENSCHIBE
9	P2020162	1	LEVA SELETTORE MARCE	LEVER	LEVIER	HEBEL
10	1020007A1	1	RONDELLA	WASHER	RONDELLE	SCHIBE
11	P3170013	1	OR	SPACER	DOUILLE	ABSTANDSSTUECK
12	P3170011	1	ANELLO DI TENUTA	OIL SEAL	JOINT D'ARBRE	WELLENDICHRING
13	P3170010	1	ANELLO DI TENUTA	OIL SEAL	JOINT D'ARBRE	WELLENDICHRING
14	P3030010	1	CUSCINETTO	BEARING	PALIER	LAGER
15	P1020079	1	RASAMENTO	SPACER	DOUILLE	ABSTANDSSTUECK
16	P1070004	1	SEEGER	CIRCLIP	SEEGER	SEEGER
17	P1080015	1	SPINA	PIN	GOUPILLE	STIFT
18	P2040010	1	GOMMINO ANTIVIBR.	RUBBER TUBE	TUBE DE PROTECTION	SCHUTZHUELLE
19	P00039219	1	SCATOLA CAMBIO	GEARBOX	BOITE DE VITESSE	GETRIEBE
20	P3040209	1	VITE SENZA FINE	WORM GEAR	VIS SANS FIN	SCHNECKE
21	1070001A1	1	SEEGER	CIRCLIP	SEEGER	SEEGER
22	P1020079	1	RASAMENTO	SPACER	DOUILLE	ABSTANDSSTUECK
23	P1020053	1	RONDELLA	SPACER	DOUILLE	ABSTANDSSTUECK
24	P3040041	1	FORCELLA INNESTO	FORK	FOURCHE	GABEL
25	P1080013	1	SPINA ELASTICA	PIN	GOUPILLE	STIFT
26	P00065452	1	BUSSOLA GUIDA	BUSHING	DOUILLE	BUECHSE
27	P3040205	1	ALBERO SECONDARIO	SHAFT	ARBRE	WELLE
28	P3050036	2	SUPP. PER ALBERO SEC.	SUPPORT	SUPPORT	HALTER
29	1020020A1	2	RONDELLA	WASHER	RONDELLE	SCHIBE
30	1070001A1	2	SEEGER	CIRCLIP	SEEGER	SEEGER
31	P3170015	1	GUARNIZIONE	GASKET	JOINT	DICHTUNG
32	P3040206	1	DISTANZIALE	SPACER	DOUILLE	DISTANZBUECHSE
33	P1010155	6	V.T.E.	SCREW	VIS	SCHRAUBE
34	P00039419	1	COPERCHIO CAMBIO	COVER	PROTECTION	ABDECKUNG
35	P3050041	1	INGRANAGGIO	GEAR	ENGRANAGE	STIRNRAD
36	P3050040	1	INGRANAGGIO	GEAR	ENGRANAGE	STIRNRAD
37	P3050042	1	INGRANAGGIO	GEAR	ENGRANAGE	STIRNRAD
38	P00038120	1	RUOTA DENT.	WHEEL	ROUE	ZAHNRAD
39	P00038099	1	INNESTO	SELECTOR COLLAR	MANCHON	SCHALTBUECHSE
40	P3050038	1	BUSSOLA SCANALATA	BUSHING	DOUILLE	BUECHSE
41	P3050045	1	INGRANAGGIO	GEAR	ENGRANAGE	STIRNRAD
42	P3050044	1	INGRANAGGIO	GEAR	ENGRANAGE	STIRNRAD
43	P3050043	1	INGRANAGGIO	GEAR	ENGRANAGE	STIRNRAD
44	P4010121	1	DISCHETTO TEMPRATO	TEMPERED RING	BAGUE EN ACIER	RING GEHAERTET
45	P2020161	1	BUSS. GUIDA-LINGUETTE	BUSHING	DOUILLE	BUECHSE
46	P3020024	1	ANELLO DI MOLLA	CIRCLIP	SEEGER	SEEGER
47	P3050046	1	GUIDA LEVA INFERIORE	LOWER LEVER GUIDE	GUIDE INFERIEUR DE LEVIER	UNTERE FUEHRUNG
48	P4010122	1	LEVA SPINGI LINGUETTA	THRUST LEVER	LEVIER DE BUTEE	ANLAUFHEBEL
49	P3040216	1	GUIDA LEVA SUPERIORE	UPPER LEVER GUIDE	GUIDE SUPERIEUR DE LEVIER	OBERE FUEHRUNG
50	P3050039	1	LINGUETTA SELETRICE	SELECTOR TAB	PATTE DE SELECTEUR	SCHALTFINGER
51	P3040204	1	ANELLO SPINGILINGUETTE	THRUST RING	BAGUE DE BUTEE	ANLAUFRING
52	P1080004	2	SPINA	PIN	GOUPILLE	STIFT
53	P1010157	1	V.T.E.	SCREW	VIS	SCHRAUBE
54	P4010123	1	LEVA DI TRAZIONE	TRACTION LEVER	LEVIER DE TRACTION	HEBEL
55	1050002A1	1	DADO	NUT	ECROU	MUTTER
56	P3170012	1	ANELLO DI TENUTA	OIL SEAL	JOINT D'ARBRE	WELLENDICHRING
57	1010018A1	1	VITE	SCREW	VIS	SCHRAUBE
58	P4010125	1	COPERCHIO FISSA CAVO	COVER	COUVERCLE	DECKEL
59	P3040211	1	ALBERO TRAZIONE	SHAFT	ARBRE	WELLE
60	P1070008	2	SEEGER	CIRCLIP	SEEGER	SEEGER
61	P1020058	2	RONDELLA	SPACER	DOUILLE	ABSTANDSSTUECK
62	P1020057	2	RONDELLA	SPACER	DOUILLE	ABSTANDSSTUECK
63	P4020019	1	LEVA ALZARUO. POS. SIN.	LEFT REAR WHEEL LEVER	LEVIER ROUE POST. GAUCHE	RADHEBEL L.
63	P4020020	1	LEVA ALZARUO. POS. DX	RIGHT REAR WHEEL LEVER	LEVIER ROUE POST. DROITE	RADHEBEL R.
64	P01141198	2	PORTA RUOTA POST.	REAR WHEEL SUPPORT	SUPPORT ROUE POST.	HALTER
65	P2020077	2	POMELLO LEVA	KNOB	POIGNEE	ABDECKUNG
66	3030003A1	4	CUSCINETTO	BEARING	PALIER	LAGER
67	P4030011	2	COPRIRUOTA POSTER.	WHEEL COVER	PROTECTION	ABDECKUNG
68	P1020086	2	RIVETTO 4,8 x 10	RIVET	RIVET	NIET
69	P1020050	2	RONDELLA	SPRING WASHER	RONDELLE ÉLASTIQUE	FEDERSCHIBE
70	P2020088	2	DISTANZIALE	SPACER	DOUILLE	SCHIBE
71	P2110001	4	SALTERELLO	KEY	CLAVETTE	SCHIBENFEDER
72	P2020060	2	COPRIPIGNONE	CAGE	CAGE	KAEFIG
73	P3020028	1	MOLLA RICHIAMO	TRACTION SPRING	RESSORT DE TRACTION	FEDER
74	P2100001	2	CAMME CRICCHETTO	CAMME DRIVER	CLIQUETTE DE CAMME	MITNEHMER
75	P3020012	2	MOLLA PER CRICCHETTO	SPRING	RESSORT	FEDER
76	P2020059	2	BUSSOLA PIGNONE	BUSHING	DOUILLE	BUECHSE
77	P3050031	2	RUOTA DENT. (PIGNOG.)	PINION	PIGNON	RITZEL
78	1020020A1	2	RONDELLA	WASHER	RONDELLE	SCHIBE
79	1070001A1	2	SEEGER	CIRCLIP	SEEGER	SEEGER
80	P3030023	4	CUSCINETTO	BEARING	PALIER	LAGER
81	P2020207	2	CERCHIO POSTERIORE	REAR WHEEL HUB	JANTE POST.	FELGE
82	P2020083	2	COPERTONE	TYRE	PNEU	REIFEN
83	P00015298	2	RUOTA POSTERIORE	WHEEL ASS. Y	ROUE COMPL.	RAD KOMPL.
84	1020007A1	2	RONDELLA	WASHER	RONDELLE	SCHIBE
85	1010018A1	2	VITE	SCREW	VIS	SCHRAUBE
86	P2020062	2	COPRIMOZ. ANT. E POST.	COVER	COUVERCLE	DECKEL
87	P1010073	1	VITE	SCREW	VIS	SCHRAUBE
88	P1080016	1	SPINA	PIN	GOUPILLE	STIFT
89	P1020054	1	RONDELLA	WASHER	RONDELLE	SCHIBE
*	P00078719	1	CAMBIO COMPLETO	GEARBOX COMPL.	TRANSMISSION COMPL.	FAHRGETRIEBE KOMP

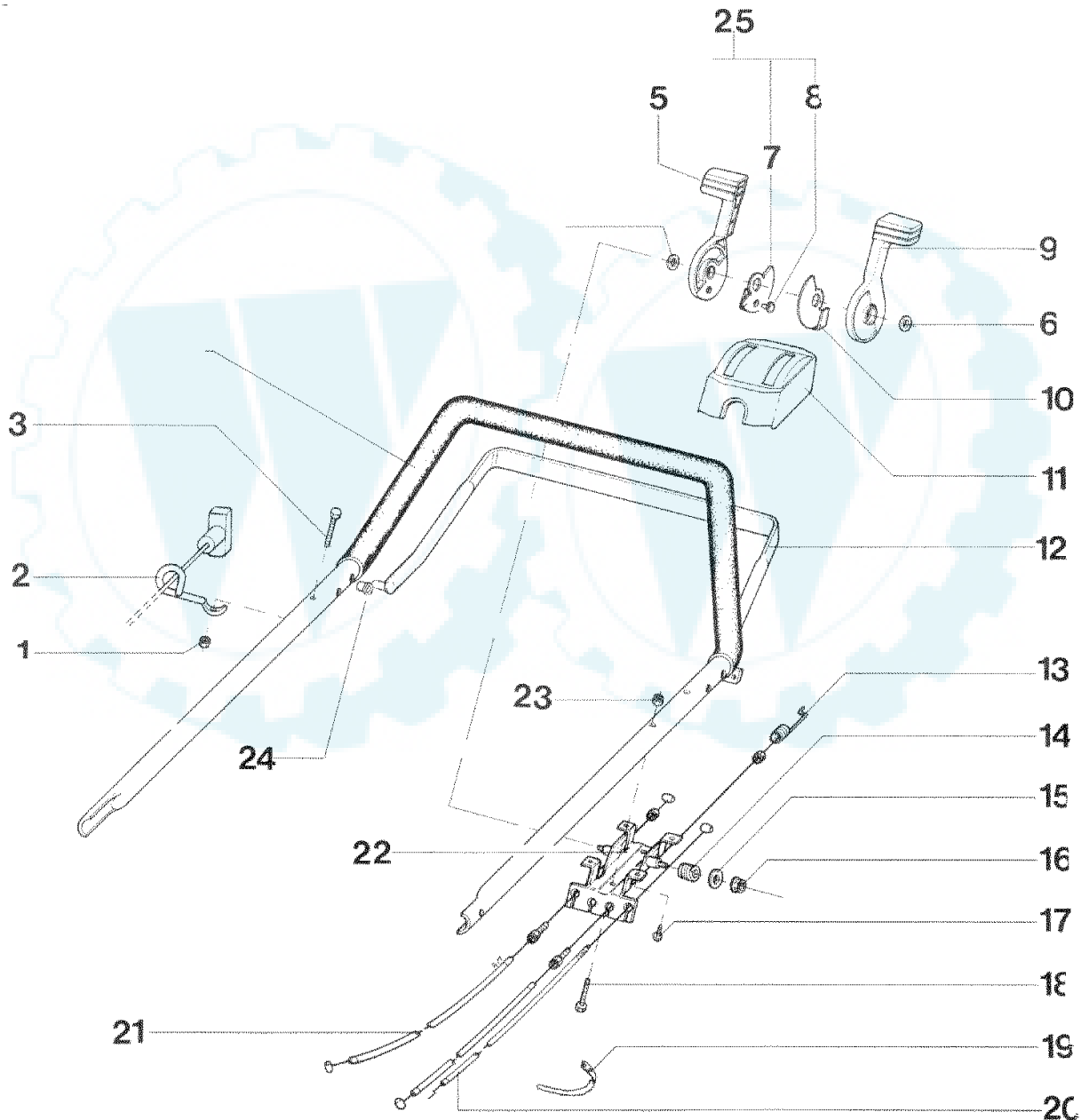
Tav. 3

Vista stegola superiore e comandi

Upper handle and controls

Mancheron partie supérieur et éléments de commande

Lenkeroberteil und Bedienungselemente



REF. N°	PART. N°	QTY	DESCRIZIONE	DESCRIPTION	DESCRIPTION	BESCHREIBUNG
1	1050002A1	1	DADO	NUT	ECROU	MUTTER
2	P01568398	1	SUPPORTO A RICCIOLO	SUPPORT	SUPPORT	HALTER
3	P1010165	1	VITE	SCREW	VIS	SCHRAUBE
4	P00070198	1	STEGOLA SUP. COMPL.	UPPER HANDLE BAR	GUIDON SUPERIEUR	OB. FUEHRUNGSHOLM
5	P2020167	1	LEVA CAMBIO	SHIFT LEVER	LEVIER DE COMMANDE	SCHALTERHEBEL
6	P1020085	2	RASAMENTO	SPACER	DOUILLE	ABSTANDSSTUECK
7	P4020126	1	PIASTRINA	PLATE	PLAQUE	PLATTE
8	P1020091	1	RIVETTO	RIVET	RIVET	NIET
9	P2020168	1	LEVA NERA CAMBIO	THROTTLE LEVER	LEVIER DE GAZ	GASHEBEL
10	P4020127	1	PIASTRINA	PLATE	PLAQUE	PLATTE
11	P2020065	1	SCATOLA COMANDI	CONTROL HOUSING	BOITE DE COMMANDE	STEUERGEHAUSE
12	P02042198	1	MANIGLIA TRAZIONE	TRACTION LEVER	TRACTION LEVER	ANTRIEBSHEBEL
13	P5010039	1	CAVO TRAZIONE	TRACTION CABLE	CABLE DE TRACTION	ANTRIEBSKABEL
14	P3020026	2	MOLLA	SPRING	RESSORT	FEDER
15	1020007A1	2	RONDELLA	WASHER	RONDELLE	SCHEIBE
16	1050003A1	2	DADO	NUT	ECROU	MUTTER
17	P1010061	4	VITE	SCREW	VIS	SCHRAUBE
18	P1010102	2	VITE	SCREW	VIS	SCHRAUBE
19	5040001A1	2	FASCETTA	CLAMP	CLAMP	RAPBAND
20	P5020051	1	CAVO ACCELERATORE	THROTTLE CABLE	CABLE DE GAZ	GASHEBEL
21	P5010037	1	CAVO PER SELET. MARCE	SHIFT CABLE	CABLE DE COMMANDE	SCHALTKABEL
22	P4020125	1	PORTA SCAT. COMANDI	CONTROL HOUSING SUPPORT	SUP. BOITE DE COMMANDE	HALTER
23	1050003A1	2	DADO	NUT	ECROU	MUTTER
24	P3040123	2	BUSSOLA PER MANIGLIA	BUSHING	DOUILLE	BUECHSE
25	P00744998	1	LEVA ROSSA CAMBIO 3 M. COMPLETA	SHIFT LEVER COMP.	ENS. DE LEV. DE COMM.	HEBELSATZ KPL.

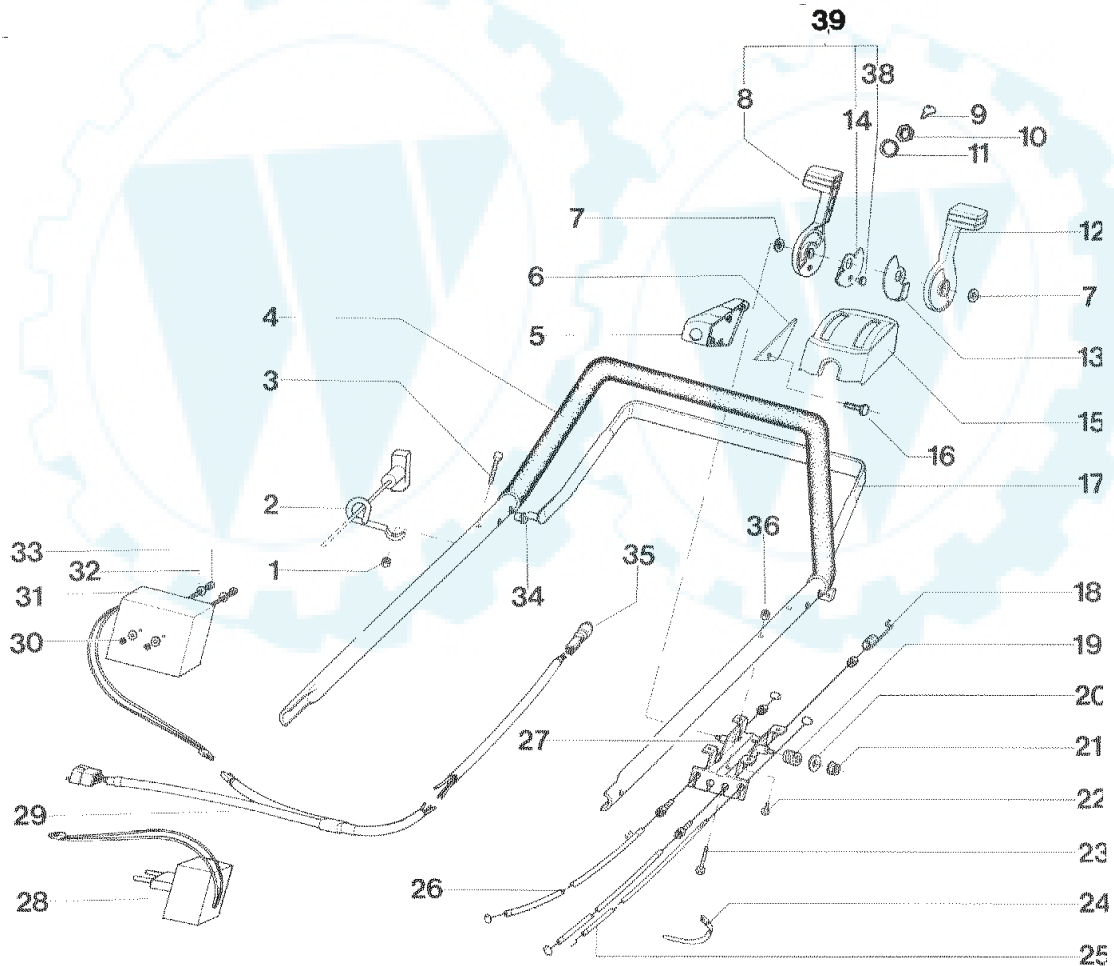
Tav. 4

Vista stegola superiore e comandi ELECTRIC START

Upper handle and controls ELECTRIC START

Mancheron partie supérieur et éléments de commande ELECTRIC START

Lenkeroberteil und Bedienungselemente ELECTRIC START



www.ersatzteil-service.de

www.ersatzteilplan.de

REF. N°	PART. N°	QTY	DESCRIZIONE	DESCRIPTION	DESCRIPTION	BESCHREIBUNG
1	1050002A1	1	DADO	NUT	ECROU	MUTTER
2	P01568398	1	SUPPORTO A RICCIOLO	SUPPORT	SUPPORT	HALTER
3	P1010165	1	VITE	SCREW	VIS	SCHRAUBE
4	P00070198	1	SIEGOLA SUP. COMPL.	UPPER HANDLE BAR	GUIDON SUPERIEUR	OB. FUEHRUNGSHOLM
5	P2020190	1	SCAT. PER AVV. ELETR.	STARTER HOUSING		SCHALTGEHAEUSE
6	P2020191	1	COP. SCAT. AVV. ELETR.	COVER	PROTECTION	ABDECKUNG
7	P1020085	2	RASAMENTO	SPACER	DOUILLE	ABSTANDSSTUECK
8	P2020167	1	LEVA ROSSA CAMB. 3 M.	SHIFT LEVER	LEVIER DE COMMANDE	SCHALTERHEBEL
9	P6030011	2	CHIAVE	KEY	CLAVETTE	SCHLUESSEL
10			VEDI PUNTO 35	SEE REF. 35	VOIR REF. 35	SIEHE REF. 35
11			VEDI PUNTO 35	SEE REF. 35	VOIR REF. 35	SIEHE REF. 35
12	P2020168	1	LEVA NERA CAMBIO 3 M.	THROTTLE LEVER	LEVIER DE GAZ	GASHEBEL
13	P4020127	1	PIASTRINA	PLATE	PLAQUE	PLATTE
14	P4020126	1	PIASTRINA	PLATE	PLAQUE	PLATTE
15	P2020192	1	SCATOLA COMANDI	CONTROL HOUSING	BOITIER DE CONTROLE	SCHALTGEHAEUSE
16	P1010167	4	VITE	SCREW	VIS	SCHRAUBE
17	P02042198	1	MANIGLIA TRAZIONE	TRACTION LEVER	TRACTION LEVER	ANTRIEBSHEBEL
18	P5010039	1	CAVO TRAZIONE	TRACTION CABLE	CABLE DE TRACTION	ANTRIBSKABEL
19	P3020026	2	MOLLA	SPRING	RESSORT	FEDER
20	1020007A1	2	RONDELLA	WASHER	RONDELLE	SCHEIBE
21	1050003A1	2	DADO	NUT	ECROU	MUTTER
22	P1010061	4	VITE	SCREW	VIS	SCHRAUBE
23	P1010102	2	VITE	SCREW	VIS	SCHRAUBE
24	5040001A1	2	FASCETTA	CLAMP	CLAMP	RAPBAND
25	P5020051	1	CAVO ACCELERATORE	THROTTLE CABLE	CABLE DE GAZ	GASHEBEL
26	P5010037	1	CAVO PER SELET. MARCE	SHIFT CABLE	CABLE DE COMMANDE	SCHALTKABEL
27	P4020125	1	PORTA SCAT. COMANDI	CONTROL HOUSING SUPPORT	SUP. BOITE DE COMMANDE	HALTER
28	P5030009	1	CARICA BATTERIA	BATTERY CHARGER	CHARGEUR	LADEGERAET
29	P5030017	1	CAVO	HARNESS WIRE	TRONC DE CABLES	ANSCHLUSSKABEL
30	1050002A1	2	DADO	NUT	ECROU	MUTTER
31	P5030008	1	BATTERIA 12 V	BATTERY	BATTERIE	BATTERIE
32	P1020055	2	RONDELLA	WASHER	RONDELLE	SCHEIBE
33	P1010077	2	VITE	SCREW	VIS	SCHRAUBE
34	P3040123	2	BUSSOLA PER MANIGLIA	BUSHING	DOUILLE	BUECHSE
35	P5030010	1	BLOC. COMP. x AVV. EL.	KEY SWITCH	INTERRUPTEUR	SCHLUESSELSCHALTER
36	1050003A1	2	DADO	NUT	ECROU	MUTTER
38	P1020091	1	RIVETTO	RIVET	RIVET	NIET
39	P00744998	1	LEVA ROSSA CAMBIO 3 M. COMPLETA	SHIFT LEVER COMP.	ENS. DE LEV. DE COMM.	HEBELSATZ KPL.

Ihr Ersatzteilspezialist im Internet

Tav. 1

Vista generale
Complete machine
Vue d'ensemble
Gesamtansicht

